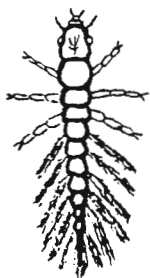
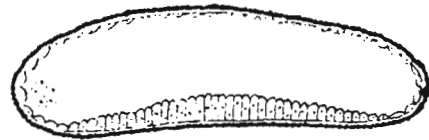


Lecture Outline

GROWTH AND DEVELOPMENT

- I. The Insect's Egg
 - A. Nucleus
 - B. Yolk
 - C. Periplasm
 - D. Vitelline membrane
 - E. Chorion
- II. Embryonic Development
 - A. Fertilization - micropyle
 - B. Superficial cleavage
 - C. Germ band
 - D. Germ layers
 - E. Segmentation
- III. Morphogenesis
 - A. Eclosion
 - B. Instars
 - C. Molting - apolysis and ecdysis
 - D. Larval types
 - E. Pupal types



Campodeiform



Eruciform



Scarabaeiform



Elateriform



Vermiform



Exarate



Obtect



Coarctate