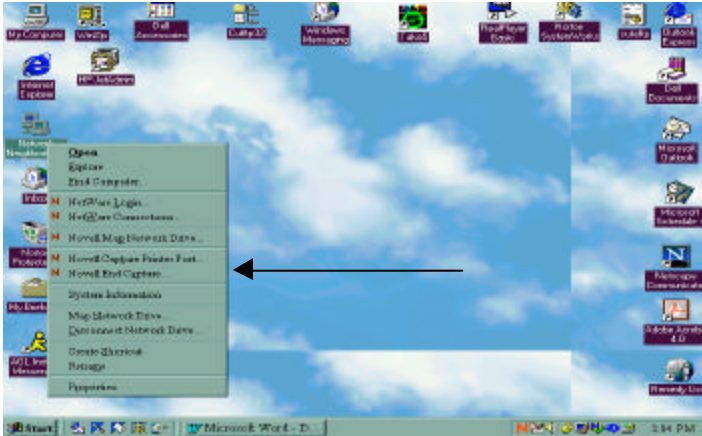


## **YOU MUST LOGIN TO NOVELL IN ORDER TO HAVE ACCESS TO THE PRINTER!**

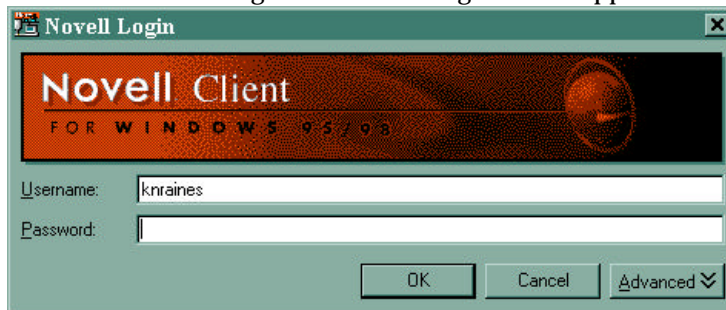
**Follow the instructions below for the login procedure**

\*\*Note: Your Novell ID and password are the same as your Unity ID and Password.

1. Click on Network Neighborhood with the right mouse button, a menu will appear.



2. Click on Netware Login. The following box will appear:



3. Enter in your Unity ID and Password. Click OK.

You are now logged into the system.

4. Remember to logout of the machine when finished. Go to Start, Shut down, then choose, "Close all Programs and Logon as Another User".

Notes:

\*\*If you forget to login, Novell will prompt you for a User ID and Password when you try to print.

\*\* If your Unity Id and Password do not allow you to login, go to [www.ncsu.edu/password](http://www.ncsu.edu/password) and change your password.

\*\*Please call Kari Raines at 3-4239 if you have any questions.

