

PLANT PATHOLOGY WEEKLY UPDATE

February 13, 2009

ATTENTION! UPCOMING EVENTS

*"People pay
for what they
do, and still
more for what
they have al-
lowed themselves
to become.
And they pay
for it very sim-
ply; by the lives
they lead." -
James Bald-
win*

- 02/20/09 2nd Annual Growing in Place Symposium** (all day event) will be held at Marbels Kids Museum, located in downtown Raleigh. For more information contact Angela Brockelsby at anglea_brockelsby@ncsu.edu
- 03/2-3/09 Farm Fork Summit** at the McKimmon Center, sponsored by the Center for Environmental Farming Systems (CEFS). For more information contact Nancy Creamer at nacny_creamer@ncsu.edu
- 03/4/09 Plant Pathology's 50th Anniversary Celebration**, reception and dinner will be held at The State Club. For more information contact Dr. Frank Louws at frank_louws@ncsu.edu and on page 3 is the website address to the *Perspective* article on Plant Pathology.
- 03/18/09 Plant Pathology Society of NC (PPSNC) Annual Meeting**, at USDA-APHIS Center for Plant Health Science and Technology, Centennial Campus. The theme this year is "Plant Pathology and Agricultural Globalization: From Crop Biosecurity to Food Safety". Registration and information on where to send your payment is on the PPSNC website <http://www.cals.ncsu.edu/plantpath/activities/societies/ppsnc>
- 03/23-25/09 APS Joint Meeting of the 55th Annual Soil Fungus Conference and the 41st Annual California Nematology Workshop**, in Salinas, CA. For more information log on to <http://soilfungus.ars.usda.gov> or e-mail paulitz@wsu.edu
- 04/24/09 NC Science Olympiad State Tournament** is the largest science K-12 Outreach event on NC State's Campus. It will take place from 1 to 7, with 150 middle and high schools competing.
- 05/2/09 Center for Environmental Farming Systems (CEFS) Spring Farm Festival**, for more information log on to <http://www.cefs.ncsu.edu>
- 05/31/09-06/4/09 14th International Sclerotinia Workshop** in Wilmington, NC. For more information contact Dr. Barbara Shew at barbara_shew@ncsu.edu

UPCOMING SEMINARS

Mondays are the **Departmental seminars** at 4 p.m. in the Toxicology Auditorium, room 2104, on Centennial Campus. View the calendar on the Departmental Website, <http://www.cals.ncsu.edu/plantpath/>, for details about each seminar.

02/24/09 Plant Biology's B.W. Wells Seminar: "The intersection of life histories, demography, land management, and restoration: Applied plant population biology in Florida and North Carolina" by Dr. Eric S. Menges, Archbold Biological Station, Lake Placid, FL, at 4:00 in 101 David Clark Labs.

03/31/09 Plant Biology Seminar: "Genes, jeans, and genomes: Exploring the mysteries of polyploidy in cotton" by Dr. Jonathan Wendel, Dept. Ecology, Evolution, & Organismal Biology, Iowa State University, at 4:00 in 101 David Clark Labs.

04/06/09 Horticulture Seminar: "TBA" by Dr. Raul Villaneuva, from Dept. of Plant Pathology—NCSU, at 3:00 in 159 Kilgore Hall

ANNOUNCEMENTS OF IMPORTANCE

- ▶ **North Carolina SARE (Sustainable Agriculture Research and Education) announces Travel Scholarships for the 2009 Seasons of Sustainability Workshops** sponsored by the Center for Sustainable Farming Systems. NC SARE will cover the \$20 registration fee directly and up to \$80 in mileage (reimbursable). The Workshop Season opens with and an all day **HIGH TUNNEL PRODUCTION Workshop on FEBRUARY 17, from 9 am to 4:30 pm.** This power packed workshop includes Steve Moore, Mary Peet, David Orr, Gary Bullen, **Cary Rivard** and Chris Harlow as presenters. New information on nutrient management and water and nutrient delivery systems will be presented. Other topics of insect and disease management, microclimate modifications and data, crop selection and crop budgets will be covered. For registration forms e-mail ebone_henderson@ncsu.edu.
- ▶ **NCSU Graduate Student Association (UGSA) and the Graduate School** are hosting the **Fourth Annual NCSU Graduate Student Research Symposium.** The Symposium will be held in the Jane S. McKimmon Center on **Wednesday, March 18, 2009. The poster session will be from 1:30 to 4:00.** The primary goal of the symposium is to showcase the outstanding quality and diversity of graduate research at NC State. The agenda and additional information can be found at <http://www.ncsu.edu/grad/research/symposium.html>.
- ▶ **Integrated Competitive Programs Grantsmanship Workshop—March 9-10, 2009, in Las Vegas, NV**
The University of Nevada Cooperative Extension will host a Grantsmanship Workshop on Integrated Research, Education, and Extension Competitive Programs with the **program presented by the Cooperative State Research, Education, and Extension Service (CSREES).** Agency staff will give an overview of CSREES Integrated Competitive Programs and describe **how to integrate research, education, and extension in developing and implementing competitive proposals.** Experienced Project Directors will speak on how to design a strong integrated project, write a winning proposal, and implement a successful integrated project. Additional topics will include the logic model planning process and a discussion about high-impact extension and education programs. Faculty in research, extension, and academics are encouraged to attend. For more information log on to <http://www.unce.unr.edu/adhoc/grantsworkshop/>.
- ▶ **Statewide Virtual IT Conference—NC Cooperative Extension's** first statewide virtual information technology conference is set for **Tuesday, March 24, and all employees are invited!** The event will feature a full day of conference sessions about technology topics, all delivered via Elluminate. Most sessions will run for 20 to 30 minutes. The conference sessions will showcase **innovative ways for using technology in Extension work** and will provide strategies for managing the increasing volumes of information coming at us. Several guest speakers from other states will share their expertise. For more information contact Adrian Gaskins -Area Agent, Information Management, NC Cooperative Extension (Duplin County Center)- by phone at 910-296-2143 or e-mail at Adrian_Gaskins@ncsu.edu.
- ▶ **The English Language Program, Summer Institute in English,** will be held at NCSU from **July 6—August 7, 2009.** Beginning to Advanced Levels for students, business people, professionals who desire more advanced proficiency. For more information about the program and cost, e-mail Toby Brody, Program Director, at tpbrody@social.chass.ncsu.edu.
- ▶ **Have an empty toner cartridge, but not a mailing label to send it to the manufacturer?** If this is your situation then here's your answer: **Waste Reduction & Recycling of NCSU,** says that you can box it up in the original box and label it "**recycle**" then put it next to the blue recycle containers on your floor. It will eventually be picked up and recycled properly. For more information log on to <http://www.ncsu.edu/sustainability/index.php>

☺ Keeping PP Connected...

☺ Dr. J. Lawrence Apple, a Plant Pathology professor emeritus, will receive the highest non academic honor bestowed by NC State. Dr. Apple will receive the **Watuga Medal** along with two other recipients, C. Richard Vaughn and E. Norris Tolsona, at the University's Founder's Day Dinner on Monday, March 9, on campus. He served on the faculty of Plant Pathology from 1955 to 1991 and is widely known for his work in International Agricultural Development. In 1994 Dr. Apple and his wife Ella established the J. Lawrence and Ella H. Apple Library Endowment. They have also been generous supporters of the Plant Pathology department and the College of Agriculture and Life Sciences, and are members of the W.C. Riddick Lifetime Giving Society. Congratulations Dr. Apple!!!

☺ Join Brantlee Richter as she and her husband participates in the Annual **St. Bald-rick's** on February 28, at the Hibernian Pub in Raleigh. This event is to raise money for Children's Cancer Research. Brantlee will be cutting all her hair off. Her goal is to raise \$2,500 for the cause. To make a donation, log on to:

http://www.stbaldricks.org/participants/shavee_info.php?ParticipantKey=2009-60826

☺ Join the **Plant Pathology Department in celebrating 50 years at NC State University**. Did you know there was a highlighted feature in the Winter 2009 issue of the *NCSU Perspective*? To learn more visit

<http://www.cals.ncsu.edu/agcomm/magazine/winter09/news.html>, then scroll down to the bottom of the page and you will see a link to the article "*Plant Pathology Department celebrates 50th Anniversary*". Information is on the Nusbaum Conference on page 8.

☺ Congratulations to **Malali Gowda**, on the birth of his son. Lokranjan Gowda was born on February 2, and weighed 8.9lbs. Fun times ahead for the Gowdas!!!

AWARD TIME IS HERE

Awards will be given in two categories: Outstanding Graduate Student Teaching Award and Outstanding Graduate Instructor Award.

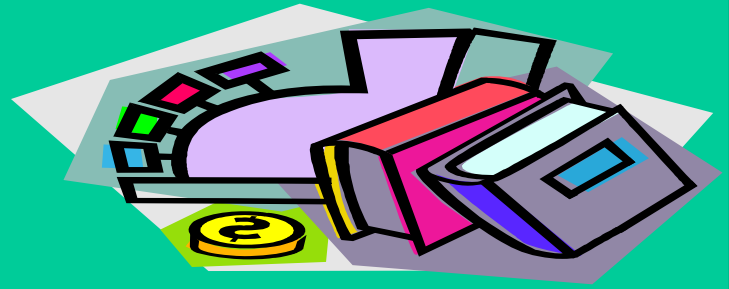
Want to Nominate Someone?

The nomination deadline is Friday, March 6th. Guidelines for nominations are available at

<http://harvest.cals.ncsu.edu/facstaff/index.cfm?pageID=977>.

If you have any questions, please contact Fred Jimenez by e-mail, fred_jimenez@ncsu.edu or at 515-9708.

From Accounting



HIGH PRIORITY →→→

Change in Submission Deadline for Proposal Processing

The CALS Contracts and Grants Proposal Processing Section will increase the amount of days allotted for proposals to be submitted and approved. The current college policy is that completed proposals (technical, attachments and budget) should be routed through PINS to the College no less than three business days prior to the deadline. The office is experiencing an increase in the number of proposals received with less than three business days to process and an increase in proposal updates being submitted to NSF, which increases the staff time being committed to reviewing/processing the same proposal. Also, electronic submissions via *grants.gov* require more staff time to monitor *grants.gov* e-mails acknowledging receipt of the application and that the application has been accepted by the sponsor or that error messages have been generated which require correction to the proposal and resubmission. We are experiencing an increased number of technical difficulties with *grants.gov* such as the system not letting us access it in a timely manner, *grants.gov* can take an inordinate amount of time to process the application thus delaying submission, and the confirming e-mails are not coming back to us sometimes until a day after the deadline. So, our goal is to release all *grants.gov* submissions two days prior to the deadline to allow time to receive all e-mails and have sufficient time to correct any errors and still meet the sponsor deadline. Due to previous mentioned challenges, **CALS is implementing the following change:** *Regardless of your submission method, the five day submission deadline applies to ALL proposals. Notify your pre-award manager at least three weeks in advance of the proposal due date of your intent to submit a proposal. Please refer to the online Plant Pathology Operations manual 's Pre-Award section for everything you need to know about proposal submission. Contact Jennifer Williams, by e-mail at Jennifer_williams@ncsu.edu, with any questions*



In an effort to manage the Department's Operational Budget, we would like for everyone to submit an **account number that can be used when needing postage to send mail by the regular postal mail service.** Mail has been left in the "metered" bin without account information and the Department's metered postage has been used for payment, but this will no longer be acceptable. If you have mail going out more than twice a month, then labels with your account information will need to be used. Eboné Henderson will order mailing labels with your account, just notify her at ejhende2@ncsu.edu.



Proposals & Grants

**Title: John V. Krutilla Research Stipend****Sponsor: Resources for the Future (RFF)****Deadline: February 27, 2009**

RFF will award one research grant for the **09-10 academic year** in honor of late John V. Krutilla, renowned environmental economist. This grant is intended for young scholars who have been **awarded a Ph.D. since June 30, 2004, to present. One award for \$9,000 will be made** . It can be used for summer salary support, to pay for research assistance, or for any other legitimate research expense. Individuals interested in applying need to submit: **1)** a completed application form available at <http://www.rff.org/fellowships/krutilla>; **2)** short description of the proposed research (no more than 5 pages); **3)** CV; and **4)** one letter of recommendation that can comment on the candidate's past research and proposed project in specific terms. Letter of recommendation needs to be sent separately. For more information go to http://www.rff.org/About_RFF/Pages/default.aspx and then click on **Fellowships and Internships**.

Title: Agriculture and Food Research Initiative (AFRI) Funding Opportunity**Sponsor: USDA's Cooperative State Research, Education, and Extension Service (CREES)**

The Food, Conservation, and Energy Act of 2008 mends subsection (b) of the Competitive, Special, and Facilities Research Grant Act (7 U.S.C. 450i(b)) to authorize the Secretary of Agriculture to establish a new competitive grant program to provide funding for fundamental and applied research, extension, and education to address food and agricultural sciences. The request for application is expected **to be released early in 2009** on the CSREES and Grants.gov Websites. In FY 2009, **CSREES anticipates \$190 million will be available for AFRI**. AFRI replaces the former National Research Initiative for Future Agriculture and Food Systems programs and addresses six priority areas: **1)** plant health and production and plant products; **2)** animal health and production and animal products; **3)** food safety, nutrition, and health; **4)** renewable energy, natural resources, and environment; **5)** agriculture systems and technology; and **6)** agriculture economics and rural communities. AFRI will support grants to address key problems of national, regional, and multi-state importance in sustaining all components of agriculture. Applicants and other parties interested in the AFRI funding opportunity are encouraged to **contact CSREES at (202) 401-5022 or e-mail AFRI@csrees.usda.gov**. More information go to http://www.csrees.usda.gov/business/reporting/stakeholder/an_stakeholder_afri.html

Title: Grant**Sponsor: U.S. Environmental Protection Agency (EPA)****Deadline: 5 p.m., February 28, 2009**

EPA Region 4 is soliciting applications to help implement the Food Quality Protection Act (FQPA) and to support efforts by the agricultural community to "transition" away from high risk pesticides (Organophosphates, carbamates, and Fumigants) to the use of less and reduced risk pesticides, alternative methods of agricultural pest control, and sustainable practices in food production. The program supports grants for education, extension, demonstration, and studies for FQPA transition and reduced risk practices for pest management in agriculture, especially on minor use crops (most fruits and vegetables). The RFA can be found at <http://www.sripmc.org/fund/SAIRFA2009.pdf>. For more information, please **contact Lora Lee Schroeder at 404-562-9015 or schroeder.lora@epa.gov**.

Employment Opportunities

Faculty Position in Agriculture, Food and the Environment

Tufts University, Friedman School of Nutrition Science and Policy—Boston, MA

Friedman School is seeking an individual with appropriate experience in teaching, research, and student mentoring. This is a full-time, 12-month position to begin summer 2009. Rank will be based on experience in teaching and research. This is a tenure track position. Salary and benefits are competitive and will be commensurate with the successful candidate's experience. **Qualifications sought are:** Ph.D. in a relevant agricultural, food policy, or nutrition-related field; strong record of independent research and publications; successful in generating external research support; University teaching experience, ideally at graduate level; experience and background in public policy; and background in private sector. **Responsibilities include, but are not limited to:** teaching 2-3 graduate level courses annually; advise graduate students, including directing independent studies and assisting with internship and job placement; supervise doctoral dissertations; and serve on school committees. **Applications will be accepted until the position is filled.** The search committee will begin **reviewing applications at the end of February 2009.** For more information e-mail ejhende2@ncsu and you will be provided the full announcement.

Interdisciplinary Research -Plant Pathologist/Biologist-Scientist

U.S. Pacific Basin Agricultural Research Center (PBARC)—Hilo, HI

The research scientist will work on control of nematodes on crops grown under tropical and subtropical conditions. **PBARC's mission** is to conduct research for development of sustainable agricultural systems and pest management programs in support of Hawaii, the Pacific Basin, and U.S. agriculture. PBARC is located within the University of Hawaii at Hilo Park of Science and Technology. Hilo is located on the Big Island of Hawaii. The position is located in the Tropical Plant Genetic Resources and Disease Research Unit and the new hire will work closely with other scientists in the unit. **Incumbent will be responsible for** fundamental and applied research that leads to the control of nematodes that inflict damage of economic importance on crops grown under tropical and subtropical conditions. The **ideal candidate has** experience working in evaluating the efficacy of nematicides in tropical or subtropical regions and/or experience in greenhouse evaluation of nematode resistance. This is a competitive, permanent appointment and U.S. citizenship is required. **Applications must be received by March 6, 2009.** For more information contact **Dr. Dennis Gonsalves** by e-mail at dennis.gonsalves@ars.usda.gov.
[Announcement ARS-X9W-0066.](#)

Plant Breeder/Pathologist

Betaseed, Inc.—Shakopee Research Station, MN

Responsibilities will include conducting trials to evaluate sugar beet germplasm for disease tolerance/other traits in the field and greenhouse; participate in breeding selections and seed production; collect, analyze, and summarize statistical data and prepare reports; stay informed of changes in the disease/pest situation affecting commercial growers and of new developments in evaluation techniques; give presentations and provide technical assistance to sales and marketing teams. **M.S. in Plant Pathology/Plant Breeding, Genetics, or related scientific field is desired**, along with a strong background in plant pathology, statistical data analysis, and database management. Active engagement in multiple phases of plant pathology and plant breeding programs, including working with GMO traits, is required. Willingness to travel domestically and internationally for meetings, research, and training sessions. Ability and willingness to supervise/manage people. Send cover letter and resume to **Betaseed, Inc., Attention: Margaret Rekoske, 1788 Marschall Road, Shakopee, MN 55379.** For more information on the company log onto <http://www.betaseed.com> **Closing date is April 13, 2009, or until filled.** APS job number 3251.

Employment Opportunities

Post-Doc Research Associate

NY State Agricultural Experiment Station (NYSAES) at Cornell University—Geneva, NY

The position is available to research and develop novel detection and identification technologies for plant pathogens, as well as to expand a currently available multi-pathogen detection array. Focus will be directed toward enhanced sensitivity of multi-pathogen detection using nano-and micro-fabrication technologies to create trampoline and cantilever-based resonator detection systems (*J. Vac. Sci. Technol. B*, 2001, 19:2825). Specific pathogens of interest include *Phytophthora capsici*, *Xylella fastidiosa* and *Xanthomonas campestris.pv.campestris*. Outreach opportunities to enhance science literacy among K-12 students also exist with the project. The candidate will work closely with a well established research team. Qualifications include a Ph.D. in Plant Pathology, Microbiology, or related fields. Candidates should be skilled in the understanding and use of state-of-the-art technologies employed for investigating the biology of plant pathogens. Salary is commensurate with qualifications and experience. Applications should include curriculum vitae, brief description of future interest, and names, addresses, e-mail addresses, and phone numbers of three references. Send applications to **Dr. H.C. Hoch, Dept. Chair and Professor, Dept. of Plant Pathology and Plant-Microbe Biology, Cornell University, NYSAES, 630 W. North Street, Geneva, NY 14456**. For more information e-mail Dr. Hoch at hch1@cornell.edu.



Additional Opportunities



Robert S. McNamara Fellowships Program Application 2009-2010

The Program provides support to young researchers working in academic and research institutions from developing countries, and preparing a doctoral thesis in a subject related to development. Research grants cover residence costs in a university or research center in a member country of the World Bank other than the home country or country of residence of the candidate. Fellowships are awarded for a period of five to ten months and must be completed between July 2009 and June 2010. The maximum amount of the grant is \$25,000. Application forms and further information about the application procedure are available on the World Bank Scholarships Program website, <http://www.worldbank.org/scholarships>. **Completed application packages must be received in Washington, DC, by February 28, 2009.** The awards will be announced in May 2009.

NESCent (The National Evolutionary Synthesis Center, in Durham, NC) is planning a wide variety of activities to celebrate 2009 as Charles Darwin's 200th birthday and the 150th anniversary of publication, *The Origin of Species*. For a summary of all of our activities, log on to: http://www.nescent.org/news/Darwins_Birthday students to the symposium. Space is limited, pre-register by logging on to: http://www.nescent.org/eog/signup_darwinday09symposium.php

Celebrating 50 years

*At North Carolina State University
The Department of Plant Pathology
proudly presents the
Nusbaum Conference*

*Thursday, March 5th
9:00 a.m. – 5:00 p.m.*

*Jane S. McKimmon Center
Raleigh, NC*

***“Building on Strength: Integrating Lessons from the Past into
Strategies for the Future”***

Morning Session:

Dr. John Sherwood, Plant Pathology Department Head & Professor, University of Georgia

Shaping the Future: A Perspective on Public Policy & Plant Pathology

Dr. Linda L. Kinkel, Professor, Dept. Plant Pathology, University of Minnesota

Integrating Ecology & Evolutionary Biology into Plant Disease & Epidemiology: To What End?

Afternoon Session:

Dr. Maria Brandl, Research Microbiologist, USDA ARS WRRRC

Contamination of Produce With Enteric Pathogens: A New Paradigm About Plant-Microbe

Interactions

Dr. Christopher C. Mundt, Professor, Dept. Botany & Plant Pathology, Oregon State University

Aerial Dispersal & Multiple-Scale Spread of Epidemic Disease: Unifying Principles or Wishful

Thinking?

Visit the conference website for details

<http://www.cals.ncsu.edu/plantpath/activities/societies/nusbaum/index.html>